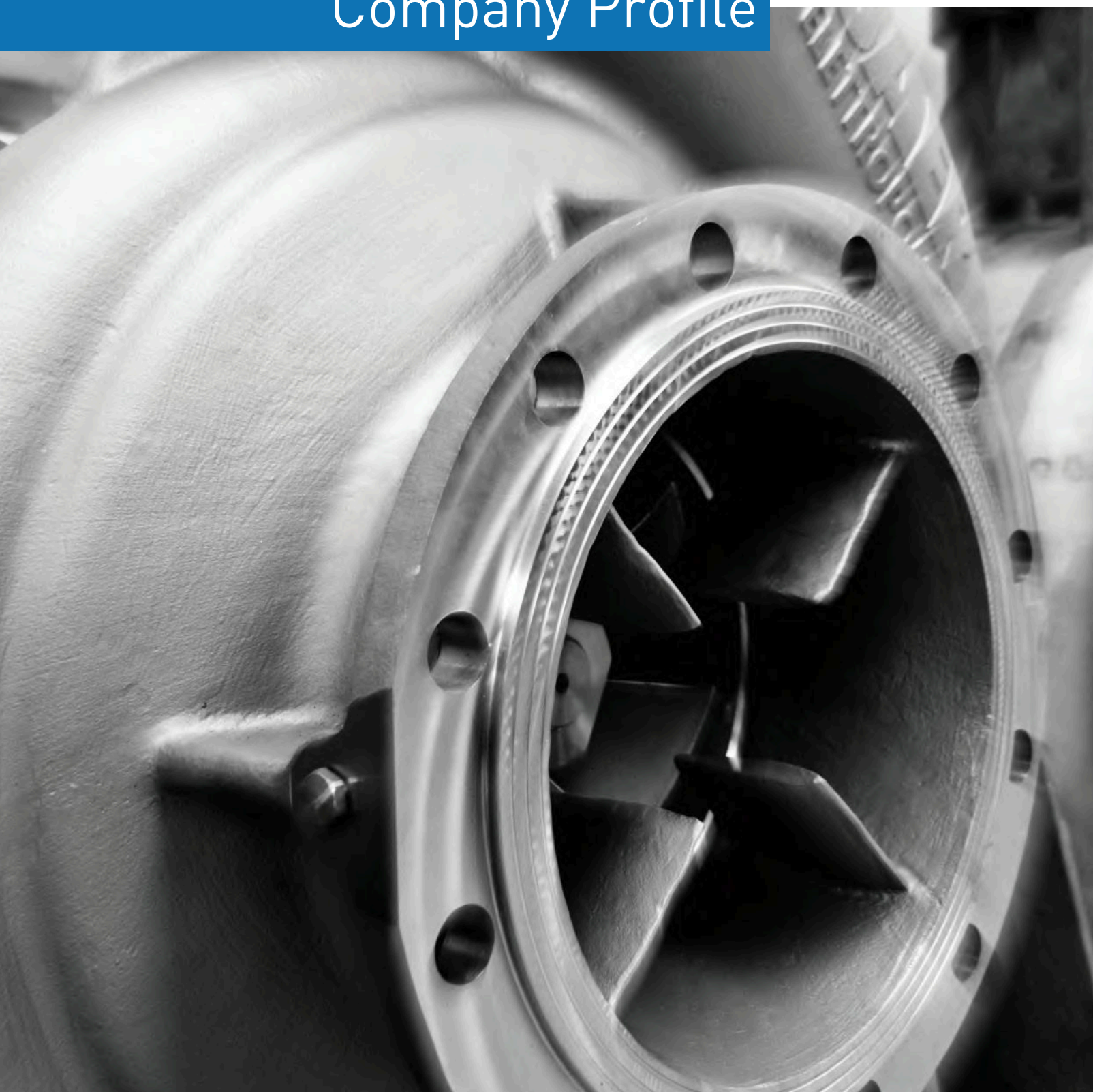


SAER[®]

ELETTROPOMPE

Company Profile







Index

Indice Indice

2

HISTORY

Storia Historia

3

OUR NUMBERS

I nostri Numeri Nuestros Numeros

4

APPLICATIONS

Applicazioni Aplicaciones

5

COMPANY

Company Empresa

10

PRODUCTS

Prodotti Productos

17

PROJECTS

Progetti Proyectos

20

SAER WORLD

Mondo SAER Mundo SAER

Storia Historia

Italian heart worldwide vision

SAER is an Italian company, established in 1951 in the province of Reggio Emilia by Mr. Carlo Favella. From a three people small workshop initially based on pumps for agriculture, nowadays SAER is a worldwide reality. With a comprehensive offer of 800 different types of pumps for fields such as industrial, civil, marine, mining, O&G, HVAC, RO and six completely automated production plants, we employ more than 240 people in Italy and export in 100 countries worldwide.

Cuore italiano visione globale

SAER è un'azienda italiana fondata nel 1951 in provincia di Reggio Emilia da Carlo Favella. Da una piccola officina di tre persone, inizialmente focalizzate sulla costruzione di pompe per il settore agricolo, oggi SAER è diventata una realtà mondiale. Con un'offerta di oltre 800 differenti tipologie di pompe per settori come civile, industriale, marino, O&G, HVAC, RO e sei siti produttivi completamente automatizzati, diamo lavoro ad oltre 240 persone in Italia ed esportiamo in 100 nazioni nel mondo.

Visión global corazón italiano

SAER es una empresa italiana fundada en 1951 en la provincia de Reggio Emilia por Carlo Favella. Desde un pequeño taller de tres personas, inicialmente enfocado en la construcción de bombas para el sector agrícola, hoy SAER se ha convertido en una realidad mundial. Con una oferta de más de 800 tipos diferentes de bombas para sectores como civil, industrial, marino, O & G, HVAC, RO y seis sitios de producción totalmente automatizados, empleamos a más de 240 personas en Italia y exportamos a más de 100 países en todo el mundo.

1

Only place where we produce: Italy

*Unico posto dove produciamo: Italia
Solo país donde producimos: Italia*

4

New series developed in the last 3 years

*Nuove serie sviluppate negli ultimi 3 anni
Nuevas series implementados en los últimos 3 años*

7

Metallurgies available

*Metallurgie disponibili
Metalurgias disponibles*

100

Countries where SAER exports

*Paesi dove SAER esporta
Países donde SAER exporta*

6

Production plants

*Stabilimenti produttivi
Plantas de producción*

10

Days average delivery time

*Giorni in media per la consegna
Días promedio de entrega*

40

Authorized service centers around the world

*Centri di assistenza autorizzati in tutto il mondo
Centros de servicio autorizados en todo el mundo*

800

Different types of pumps

*Tipi diversi di pompe
Diferentes tipos de bombas*

900

m max pump head

*m prevalenza massima
m maxima prevalencia*

10000

m³/h maximum pump flow

*m³/h portata massima
m³/h máximo caudal*





HVAC

HVAC
HVAC

Durability and ease of installation
Resistenza e facilità di installazione
Resistencia y facilidad de instalación



CIVIL

Civile
Civil

High efficiency for energy saving
Alta efficienza per risparmio energetico
Alta eficiencia para el ahorro de energía



INDUSTRIAL

Industriale
Industrial

For treating water according to its final use
Per trattare l'acqua secondo il suo utilizzo finale
Para tratar el agua según su uso final



AGRICULTURE AND IRRIGATION

Agricoltura ed irrigazione
Agricultura y riego

Water wastage reduction enhancing productivity
Riduce sprechi d'acqua aumentando produttività
Reduce el desperdicio de agua mejorando la productividad



UNDERGROUND EXTRACTION

Estrazione dal sottosuolo
Extracción del subsuelo

One of the largest ranges in the industry with pumps and motors from 4" to 14"
Una delle più vaste gamme nel settore con pompe e motori da 4" a 14"
Una de las gamas más amplias del sector con bombas y motores de 4" a 14"



MINING

Minerario
Mineria

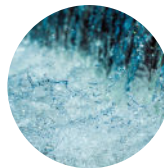
Built for extended operation in the toughest environments
Progettate per operazioni prolungate in situazioni di stress
Diseñadas para una operación prolongada en los entornos más adversos



O&G

O&G
O&G

Extensive range of pumps for the marine, naval and off shore fields with top delivery time
Estesa gamma di pompe per il settore marino, navale ed off shore con ottimi tempi di consegna
Amplia gama de bombas para los sectores marinos, navales y offshore con excelentes tiempos de entrega



WATER TREATMENT

Trattamento acque
Tratamiento aguas

Trustworthy and tailored solutions
Soluzioni affidabili e su misura
Soluciones confiables y personalizadas

PROUDLY INDIPENDENT

Almost a century of knowledge in the water pumping and its applications has lead SAER to develop an incredible range in terms of variety of materials and type of construction including: surface motors, end suction, close coupled and high pressure pumps, split casing, in line pumps, submersible pumps and motors, small commercial series, booster sets.

ORGOGLIOSAMENTE INDIPENDENTI

Quasi un secolo di esperienza nel settore del pompaggio e relative applicazioni, ci ha portati a sviluppare un portfolio incredibile di prodotti sia in termini di tipologia che varietà di materiali disponibili. La gamma comprende: motori di superficie e sommersi, pompe end suction, monoblocco e ad alta pressione, split casing, pompe in line e sommerse, serie residenziali e booster set.

ORGULLOSAMENTE INDEPENDIENTES

Casi un siglo de conocimiento en el bombeo de agua y sus aplicaciones nos ha llevado a desarrollar una gama increíble en términos de variedad de materiales y tipologías, dentro de las cuales podemos destacar: motores de superficie, bombas de alta presión, end suction y monobloc, carcasa partida, bombas en línea, bombas y motores sumergibles, pequeñas series comerciales, booster sets.

MANUFACTURING CAPABILITY

Headquarter: R&D and quality department, testing facilities, production.

Motor division: production from 4" up to 12" submersible motors and up to 110 kW surface engines.

Technology center: dedicated area for training, museum and showroom.

High flow/pressure pumps plant: to develop pumps up to 10.000 m³/h.

Shaft plant: production of shaft.

Winding plant.

CAPACITÀ PRODUTTIVA

Headquarter: R&D e dipartimento qualità, sala prove, produzione.

Divisione motori: produzione di motori sommersi da 4" a 12" e motori di superficie fino a 110 kW.

Centro tecnologico: area dedicata per i training, museo e showroom.

Stabilimento pompe alta portata/prevalenza: sviluppo pompe fino a 10.000 m³/h.

Dipartimento alberi.

Stabilimento avvolgimenti.

CAPACIDAD DE FABRICACIÓN

Sede: departamento de I + D y calidad, talleres de pruebas, producción.

División motores: producción de motores. sumergibles de 4 "hasta 12" y motores de superficie de hasta 110 kW.

Centro tecnologico: área dedicada para capacitación, museo y sala de exposición.

Planta de bombas de alto caudal / presión: para desarrollar bombas de hasta 10.000 m³ / h.

Planta de ejes.

Planta de bobinado.



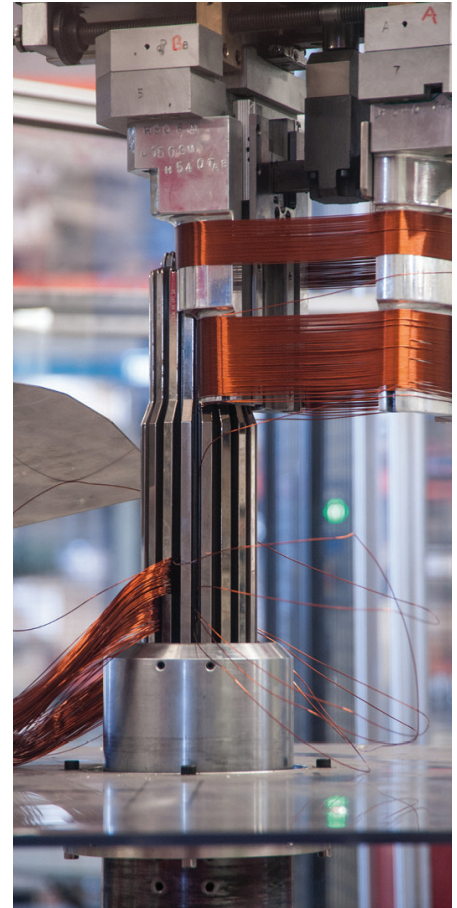
PASSION FOR RESEARCH

Our product range is continuously evolving. Not only new series are designed, but also all the lines to be in conformity with the latest norms and parameters are updated, giving birth to innovative and energy saving water pumping solutions.



QUALITY CONTROL

All over the production cycle a complete protocol warrants the quality of the products. SAER brand through its know-how, ISO 9001 and flexible processes is worldwide recognized as synonymous of excellence.



CENTRALIZED PRODUCTION

In house R&D, machining, assembling, testing: a full control of all the phases of manufacturing takes place in our facilities. Investments are done at all levels to continuously improve efficiency, safety and quality.

PASSIONE PER LA RICERCA

La nostra gamma prodotti è in evoluzione continua. Oltre alla progettazione di nuove serie aggiorniamo costantemente le storiche, affinché siano conformi alle ultime normative in materia, per offrire soluzioni innovative ed energy saving.

CONTROLLO QUALITÀ

All over the production cycle a complete protocol warrants the quality. SAER brand through its know how, ISO 9001 and flexible processes is worldwide recognized as synonymous of excellence.

PRODUZIONE CENTRALIZZATA

R&D, lavorazioni, assemblaggio e test: tutto viene performed all'interno dei nostri stabilimenti. Investimenti vengono fatti a tutti i livelli per migliorare efficienza, salvaguardia e qualità.

PASIÓN POR LA INVESTIGACIÓN

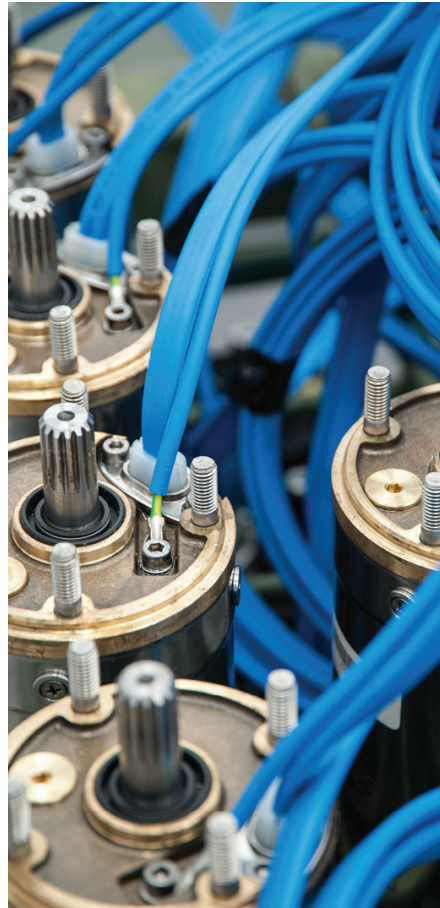
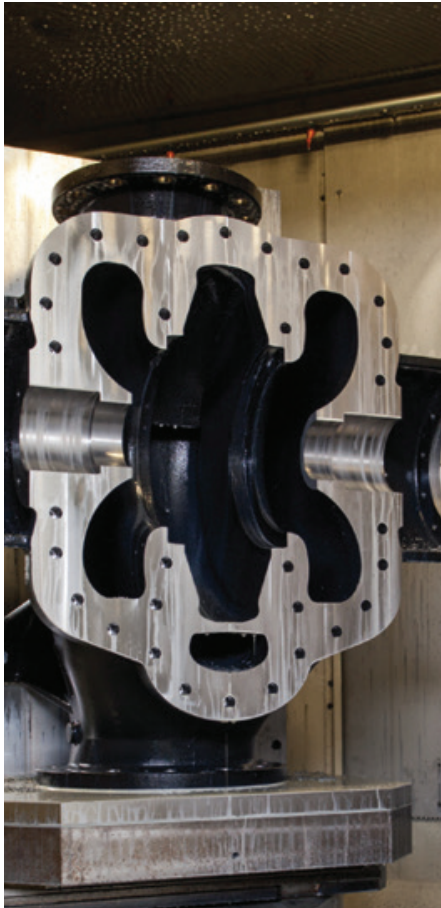
Nuestra gama de productos está en constante evolución. No solo se diseñan nuevas series, sino que también actualizamos constantemente todas las líneas para estar en conformidad con las últimas normas y parámetros, dando lugar a soluciones innovadoras en el bombeo de agua y ahorro de energía.

CONTROL DE CALIDAD

A lo largo del ciclo de producción, un completo protocolo garantiza la calidad de los productos. El know-how, la certificación de calidad ISO 9001, la flexibilidad y la eficiencia que nos distinguen son factores que han convertido a la marca SAER en sinónimo de excelencia reconocida a nivel mundial.

PRODUCCIÓN CENTRALIZADA

I+D, mecanizado, montaje y prueba: todo se realiza dentro de nuestras plantas. Las inversiones se realizan en todos los niveles para mejorar la eficiencia, la protección y la calidad.



SMART SOLUTIONS

The combination of completely automated processes and highly specialized personnel, contribute to the creation of resistant and performing products even in difficult situations, with constant attention to process optimization and the search for the best efficiency.

FAST DELIVERY

Delivery time is a major factor of our success, and this can be achieved only through an optimized coordination of all the phases involved in the production process. The projection towards innovation and know-how acquired over the years make the development of new products possible, and lead us to find solutions for every need in a short time.

ADDED VALUE

Equipped with state of the art monitoring systems, our testing rooms certify the high quality of the products. Moreover, at the end of every production line SAER performs standard controls.

SOLUZIONI SMART

Il connubio tra processi completamente automatizzati e personale altamente specializzato contribuisce alla creazione di prodotti resistenti e performanti anche in situazioni gravose, con una costante attenzione all'ottimizzazione di processo e ricerca della migliore efficienza.

RIDOTTI TEMPI DI CONSEGNA

Il tempo di consegna è uno dei fattori cardine del nostro successo, e un livello ottimale può essere raggiunto solo con una perfetta coordinazione di tutte le fasi coinvolte nel processo produttivo. La proiezione verso l'innovazione e il know-how acquisito negli anni rendono possibile lo sviluppo di nuovi prodotti e ci portano a trovare soluzioni per ogni necessità in tempi ridotti.

VALORE AGGIUNTO

Le sale prova, equipaggiate con i più aggiornati sistemi di monitoraggio, certificano la qualità dei prodotti. Oltre al collaudo finale, inoltre, vengono effettuati controlli alla fine di ogni linea di produzione.

SOLUCIONES INTELIGENTES

Atención constante para optimizar todos los procesos y buscar un mejor uso de los recursos energéticos. La combinación de procedimientos totalmente automatizados y un personal altamente especializado contribuye a la creación de productos altamente resistentes y efectivos, incluso en situaciones de trabajo pesado.

ENTREGA RÁPIDA

El tiempo de entrega es uno de los factores clave en el éxito de SAER, y esto solo se puede lograr a través de una coordinación optimizada de todas las fases del proceso productivo. La proyección hacia la innovación y el know-how adquirido a lo largo de los años nos permite desarrollar nuevos productos y encontrar rápidamente las soluciones para cada necesidad.

VALOR AÑADIDO

Equipados con sistemas de monitoreo de última generación, las salas de pruebas SAER certifican la alta calidad de los productos. Además, al final de cada línea de producción, se realizan controles estándar.



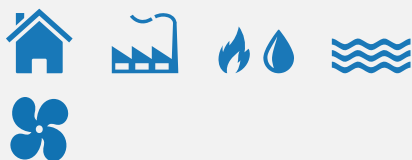
L-IN LINE PUMPS



IR - CLOSE COUPLED ELECTRIC PUMPS



MG - STUB SHAFT PUMPS



Parts in pressure are made of ductile cast iron, making it the ideal choice to deal up with liquids up to 140 ° C. Minimum efficiency index > 0,4 for most of the models.
 CAST IRON STAINLESS STEEL
 BRONZE DUCTILE IRON

MAXIMUM FLOW RATE:
 580 m³/h

MAXIMUM HEAD
 90 m

MAXIMUM POWER
 75 kW



One of SAER's longest-running product series, completely redesigned to offer the highest performance in terms of output and efficiency.
 CAST IRON STAINLESS STEEL
 BRONZE **SUPER DUPLEX**

MAXIMUM FLOW RATE:
 450 m³/h

MAXIMUM HEAD
 129 m

MAXIMUM POWER
 45 kW



Solid and reliable design which allows easy maintenance. Easy to disassemble, finds applications in several fields where overall reduced dimensions are required.
 CAST IRON STAINLESS STEEL
 BRONZE

MAXIMUM FLOW RATE:
 255 m³/h

MAXIMUM HEAD
 102 m

MAXIMUM POWER
 75 kW



**NCB NORMALIZED
PUMPS ACCORDING TO
EN 733**



Centrifugal pumps meeting EN 733. Various types of seals and wear rings are available. Possibility to couple with diesel engine.
CAST IRON STAINLESS STEEL
BRONZE **SUPER DUPLEX**
DUCTILE IRON

**MAXIMUM FLOW RATE:
675 m³/h**

**MAXIMUM HEAD
129 m**

**MAXIMUM POWER
90 kW**



**NCBK HIGH FLOW-RATE
PUMPS EXCEEDING
EN 733**



For high flow demanded applications; used for firefighting, heating and cooling systems, water supply, irrigation, industry and naval as well mining sectors.
CAST IRON STAINLESS STEEL
BRONZE **SUPER DUPLEX**
DUCTILE IRON

**MAXIMUM FLOW RATE:
2300 m³/h**

**MAXIMUM HEAD
97 m**

**MAXIMUM POWER
400 kW**



**SKD HIGH FLOW RATE
SPLIT CASING PUMPS**



Conceived and produced in Italy, as proven by the short delivery times. High efficiency and reliability provide a pump with minimal maintenance costs.
CAST IRON STAINLESS STEEL
BRONZE **SUPER DUPLEX**
ALUMINIUM BRONZE

**MAXIMUM FLOW RATE:
5000 m³/h**

**MAXIMUM HEAD
280 m**

**MAXIMUM POWER
1200 kW**



OP - MULTI-STAGE
HORIZONTAL PUMPS



MK - MULTI-STAGE
VERTICAL PUMPS



TB - PRESSURISATION
GROUPS WITH TWO OR
MORE PUMPS



Suitable for pumping clean water and chemically non-corrosive liquids, for residential uses, irrigation, agriculture and automated distribution in medium-small tanks.
CAST IRON STAINLESS STEEL

MAXIMUM FLOW RATE:
40 m³/h

MAXIMUM HEAD
162 m

MAXIMUM POWER
12,7 kW



Compact, multi-stage vertical pumps, suitable for applications where high pressure is required. MKM version with reduced overall dimensions and reduced costs.
CAST IRON STAINLESS STEEL

MAXIMUM FLOW RATE:
110 m³/h

MAXIMUM HEAD
394 m

MAXIMUM POWER
55 kW



Suitable for water pressurization and distribution in civil, industrial and agricultural systems. Verison available up to 6 pumps
CAST IRON STAINLESS STEEL



TM - MULTI-STAGE
HORIZONTAL PUMPS



TMV MULTI-STAGE
VERTICAL PUMPS



TMB MULTI-STAGE
HORIZONTAL PUMPS



Suction body with axial inlet. For applications where high pressure is required. Low noise and high resistance to wear. Top delivery time for all the range.
CAST IRON STAINLESS STEEL
BRONZE **SUPER DUPLEX**

MAXIMUM FLOW RATE:
850 m³/h

MAXIMUM HEAD
642 m

MAXIMUM POWER
710 kW



Suitable anywhere high pressure is required. Possibility to change outlet and inlet orientation.
CAST IRON STAINLESS STEEL
BRONZE **SUPER DUPLEX**

MAXIMUM FLOW RATE:
310 m³/h

MAXIMUM HEAD
403 m

MAXIMUM POWER
250 kW



Suction body with radial inlet. Used in water plants supply, irrigation systems, refrigeration, heating, snowing, etc. Oversized ball bearings improve resistance to wear.
CAST IRON STAINLESS STEEL
BRONZE **SUPER DUPLEX**

MAXIMUM FLOW RATE:
850 m³/h

MAXIMUM HEAD
642 m

MAXIMUM POWER
710kW



COMMERCIAL PUMPS



A complete range for global solutions in residential applications: threaded centrifugal pumps, peripheral, self priming, double impellers, gear and swimming pool pumps, available in several materials CAST RON, BRASS, STAINLESS STEEL

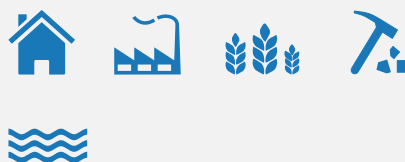
MAXIMUM FLOW RATE:
210 m³/h

MAXIMUM HEAD
92 m

MAXIMUM POWER
22 kW



MBS MBSH MBS-L
MULTI-STAGE VERTICAL
PUMPS



One pump for three different solutions: MBSH- version with suction base, multi-stage pump; MBS-L- booster pump, MBS -submersible pump. Durability even when sand is present. STAINLESS STEEL TECHNOPOLYMER

MAXIMUM FLOW RATE:
18 m³/h

MAXIMUM HEAD
113 m

MAXIMUM POWER
4 kW



T ONE PRESSURISATION
SYSTEM



Keeps the output pressure constant independently of the requested flow rate. Up to 8 parallel multipump modules, the systems communicate via Bluetooth®, no cable is required to connect them.

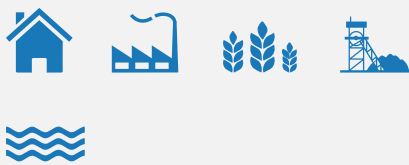
MAXIMUM FLOW RATE:
15 m³/h

MAXIMUM HEAD
66 m

MAXIMUM POWER
1,5 kW



**CL CLE REWINDABLE OIL
FILLED SUBMERSIBLE
MOTOR**

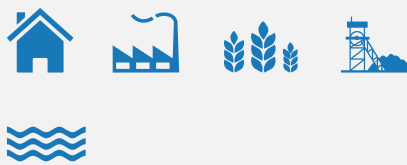


Completely rewindable, non-toxic oil-filled submersible motors. Extremely reliable can be coupled to any submersible pump, thanks to the NEMA coupling. For temperatures up to 35°C.
BRASS CAST IRON STAINLESS STEEL

MAXIMUM POWER
1 ~ 0,37 ÷ 4 kW
3 ~ 0,37 ÷ 7,5kW



**MS WATER FILLED
FILLED SUBMERSIBLE
MOTOR**



Rewindable water-filled motors, NEMA coupling until 8". Available in 2-pole and 4-pole starting from 8". Designed and produced by SAER. Exclusive shaft seal system as standard. Winding available also in PE+PA for hot water.
CAST IRON STAINLESS STEEL
BRONZE DUPLEX

MAXIMUM POWER
300 kW



SUBMERSIBLE PUMPS



Pumps extremely reliable even in hard conditions, as well as facilitating maintenance. Radial and Semi-axial versions, from 4" up to 14"
CAST IRON STAINLESS STEEL
BRONZE **SUPER DUPLEX**

MAXIMUM FLOW RATE:
725 m³/h

MAXIMUM HEAD
955 m

MAXIMUM POWER
300 kW



NCA FOR DRAINAGE AND WASTE WATER FOR DRY INSTALLATION



Suitable for pumping domestic and industrial foul water, viscous and corrosive liquids, liquids with fibrous and solid substances, agricultural slurry, as well as generally dirty and muddy water.

MAXIMUM FLOW RATE:
1600 m³/h

MAXIMUM HEAD
60 m

MAXIMUM POWER
160 kW



SD SUBMERSIBLE WASTE WATER PUMPS



Coming from SAER unmatched knowledge in the borehole pumps and submersible motors field, the brand new SD series, submersible wastewater pump is now reality. Designed for managing waste, raw and sewage water.

MAXIMUM FLOW RATE:
1800 m³/h

MAXIMUM HEAD
70 m

MAXIMUM POWER
55 kW

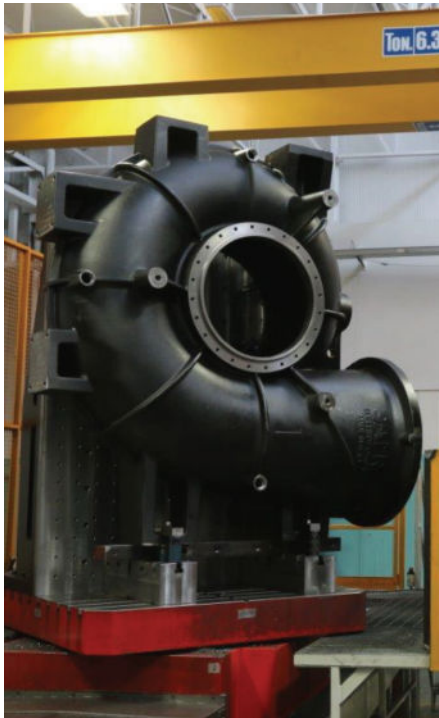


MT ELECTRICAL MOTOR



Standardized motors, available in different efficiency classes and forms. Availability of frequency converter integrated up to 15 kW.

MAXIMUM POWER
55 kW



OUR GOAL

Our flexibility allows us to integrate solutions to best meet the needs of each customer, following their evolutions and growing together.

IL NOSTRO OBIETTIVO

La nostra flessibilità ci permette di integrare soluzioni per rispondere al meglio alle esigenze di ciascuno, seguendone le evoluzioni e crescendo insieme.

NUESTRO OBJETIVO

Nuestra flexibilidad nos permite integrar soluciones para responder a las exigencias de cada cliente, siguiendo la evolución del mercado y creciendo juntos.

RELATIONS

Most of our clients are long-standing partners because we aim to establish relationships based on satisfaction, efficiency and trust.

RELAZIONI

La maggior parte dei nostri clienti lo sono di lungo corso poiché miriamo a stabilire relazioni basate sulla soddisfazione, sull'efficienza e sulla fiducia.

RELATIONS

La mayor parte de nuestros clientes son partners de largo plazo, ya que nuestro objetivo es establecer relaciones basadas en la satisfacción, eficiencia y confianza.

PREFERRED CHOICE

Acting as a single-source supplier, from the initial project until the final test we became the preferred choice of private and public corporations, OEM, contractors, and many others.

SCelta PREFERENZIALE

Agendo come fornitore single-source, dal progetto fino al test finale, siamo diventati la scelta preferenziale di moltissime aziende private e pubbliche, OEM, studi di ingegneria e non solo.

ELECCION PREFERENTE

Actuando como un proveedor single-source, desde el proyecto hasta la realización de su prueba final, nos hemos convertido en la opción preferente de muchas empresas privadas y públicas, OEMs, contratistas entre otros.

LATEST PROJECTS

CANADA

Submersible pumps for gold mine projects



HOLLAND

Water treatment plant replacement pumps



SPAIN

Water boosting in Granada municipality



Stainless steel pump for a job in the port of Valencia



PARAGUAY

Taylor made high flow pump up to 10.000 m³/h



MOROCCO

Submersible pumps working with solar pannels



ALGERIA

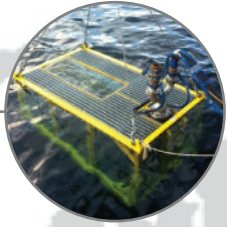
High pressure stainless steel pumps for water supply projects



ITALY

Project and realization of a ballast pump for drainage in marine application





NORWAY

Submersible pumps for fire fighting applications in off shore platforms



RUSSIA

Pumping station for cooling in industry applications



BULGARIA

Heating system in green house



KAZAKHSTAN

High pressure pumps in super duplex for desalination plant



IRAQ

Taylor made design and realization of double impeller split casing pumps



MALAYSIA

Submersible pumps and motors for secondary applications in off shore rigs



SAUDI ARABIA

Pumps coupled with diesel engine for mobile cleaning system



EGYPT

Irrigation projects



AUSTRALIA

Submersible pumps in AISI 316 for iron mines applications

Mondo SAER Mondo SAER

To know more of SAER world, check out our website, our videos and our social.

Per saperne di più del mondo SAER, consultate il nostro sito web, i nostri video e le nostre pagine social.

Para conocer más del mundo SAER, consulte nuestro sitio web, nuestros videos y nuestras páginas sociales



SAER.Elettropompe



@saerelettropompe



Saer Elettropompe



Saer Elettropompe



SAER Pump Selector



Company presentation video



Lseries in line pumps video



NCB NCBK series end suction pumps video

#saerready



Italia

CERTIFICATO

Nr. 50 100 3317 - Rev.007

Si attesta che / This is to certify that

IL SISTEMA QUALITÀ DI
THE QUALITY SYSTEM OF

SAER[®]
ELETTROPOMPE

SAER ELETTROPOMPE S.p.A.

SEDE LEGALE E OPERATIVA:
REGISTERED OFFICE AND OPERATIONAL SITE:

**VIA CIRCONVALLAZIONE 22
IT - 42016 GUASTALLA (RE)**

SEDI OPERATIVE: **VEDI ALLEGATO 1**
OPERATIONAL SITES: **SEE ANNEX 1**

È CONFORME AI REQUISITI DELLA NORMA
HAS BEEN FOUND TO COMPLY WITH THE REQUIREMENTS OF

UNI EN ISO 9001:2015

QUESTO CERTIFICATO È VALIDO PER IL SEGUENTE CAMPO DI APPLICAZIONE
THIS CERTIFICATE IS VALID FOR THE FOLLOWING SCOPE

**Progettazione e fabbricazione di elettropompe centrifughe e
sommersa, motori elettrici e motori sommersi;
commercializzazione dei relativi accessori (IAF 18, 19, 29)**

**Design and manufacture of centrifugal and submersible electric
pumps and electrical and submersible motors;
trade of related accessories (IAF 18, 19, 29)**



SGQ N° 049A

Membro degli Accordi di Mutuo Riconoscimento
EA, IAF e ILAC
Signatory of EA, IAF and ILAC Mutual
Recognition Agreements

Per l'Organismo di Certificazione
For the Certification Body

TÜV Italia S.r.l.

Validità / Validity

Dal / From: **2018-07-04**

Al / To: **2021-07-03**

Data emissione / Printing Date

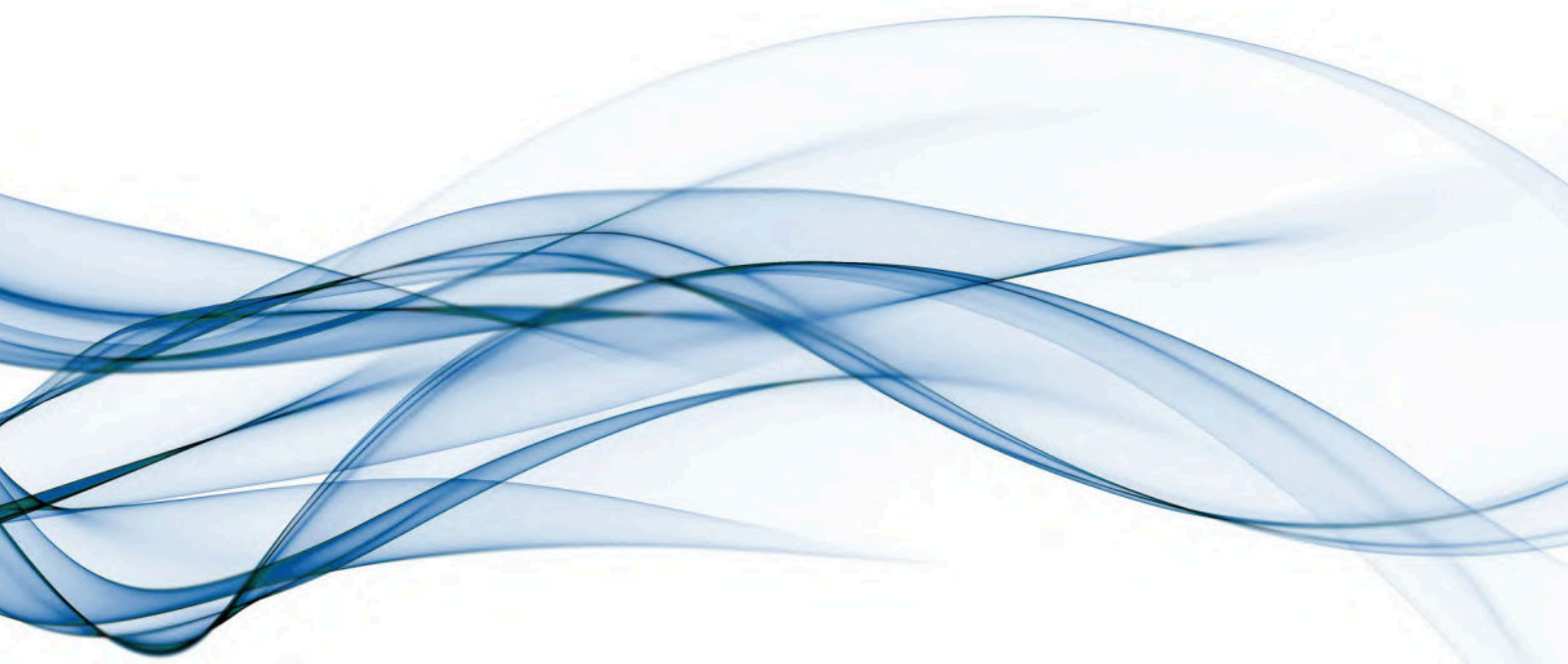
Andrea Coscia
Direttore Divisione Business Assurance

2018-07-04

PRIMA CERTIFICAZIONE / FIRST CERTIFICATION: 2003-10-09

"LA VALIDITÀ DEL PRESENTE CERTIFICATO È SUBORDINATA A SORVEGLIANZA PERIODICA A 12 MESI E AL RIESAME COMPLETO DEL SISTEMA DI GESTIONE AZIENDALE CON PERIODICITÀ TRIENNALE"

"THE VALIDITY OF THE PRESENT CERTIFICATE DEPENDS ON THE ANNUAL SURVEILLANCE EVERY 12 MONTHS AND ON THE COMPLETE REVIEW OF COMPANY'S MANAGEMENT SYSTEM AFTER THREE-YEARS"



- La ditta si riserva la facoltà di modificare senza preavviso i dati riportati in questo catalogo.
- Saer can alter without notifications the data mentioned in this catalogue.
- Saer se reserva el derecho de modificar los datos indicados en este catalogo sin previo aviso.
- Saer se réserve le droit de modifier sans préavis les données techniques dans ce catalogue.
- Компания оставляет за собой право без предупреждения корректировать данные содержащиеся в данном каталоге.
- Das Unternehmen behält sich das Recht vor, die in dem Katalog vorhandenen Daten ohne Benachrichtigung zu ändern.

SAER[®] **ELETTROPOMPE**

SAER ELETTROPOMPE S.p.A.

Via Circonvallazione, 22 - 42016 Guastalla (RE)
Italy Tel. +39 0522 830941 - Fax +39 0522 826948
E-mail: info@saer.it - www.saerelettropompe.com

 SAER.Elettropompe -  @saerelettropompe -  Saer Elettropompe -  Saer Elettropompe



SAER Pump Selector



SAER is an ISO 9001:2015
Certified Company
Certificate N. 501003317

