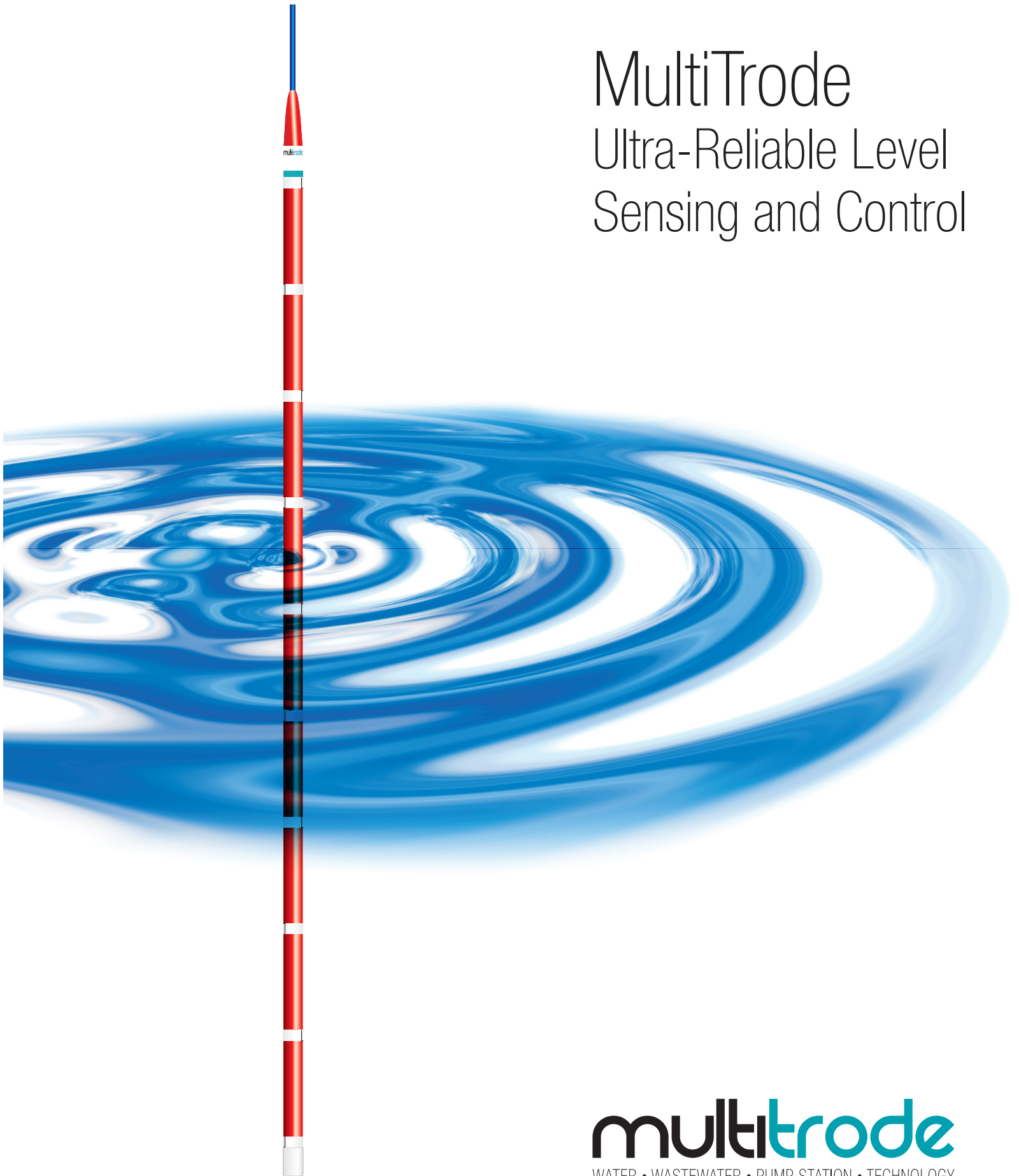


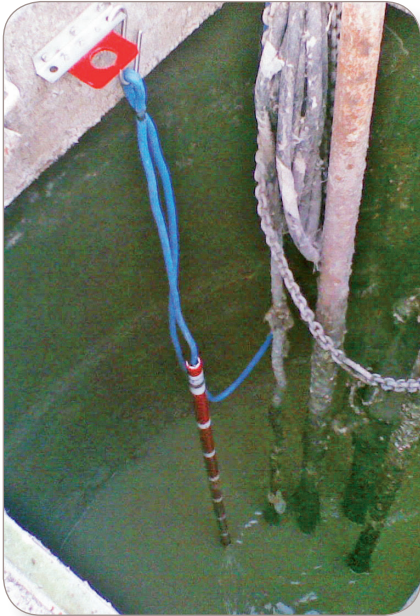
MultiTrode

Ultra-Reliable Level
Sensing and Control



multitrode
WATER • WASTEWATER • PUMP STATION • TECHNOLOGY

The Probe... Dip it. Set it. Leave it.

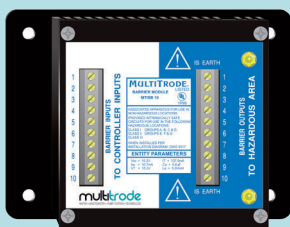


Why is it easier to install than other level devices?

All you do is hang the Probe on its own cable into your wet well, using the bracket we supply. Installation is simple - any one of your technicians could do it in an hour or so. What's more, you install the Probe relatively low down in the wet well, so compared to ball floats it allows the well to be cleaned out more thoroughly. That means less debris build-up, odors and pump clogs.

MTISB Intrinsically Safe Barrier

The MTISB is used between MultiTrobe Probes and control equipment. It eliminates the risk of dangerous energy entering the potentially explosive environment where the Probe is located. 5-channel (MTISB5) and 10-channel (MTISB10) barriers available.



MultiTrobe's Probe is the most reliable and cost-effective level sensor available in the water and wastewater industry today.

- 10+ year lifetime
- Cost effective and virtually maintenance free
- Very low and reliable pump cut-out
- Unaffected by build up (fat, grease, sludge and foam)
- Reduces maintenance cost
- Intrinsically safe when installed with MTISB barrier
- Eliminates false readings
- Simple to install and maintain
- Cuts the risk of spills
- UL, ULC, CTick, and CE Approved

Why is it so Reliable?

There are no electronics and no moving parts - which results in a long lifetime. **That's why it gets a 10-year warranty!**



How would your Ultrasonic hold up to this application?

The MultiTrobe Probe is unaffected by fat, foam, grease and sludge.

How does it work?

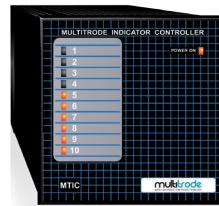
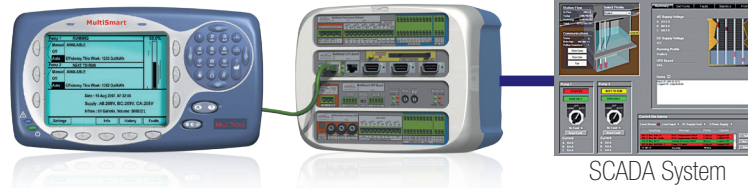
The Probe works by using the conductive properties of the water itself to complete a circuit with a controller. It's mounted near the inflow, allowing the turbulence to keep it clean. Even if a build-up does occur it's usually conductive (in wastewater) and so the Probe keeps right on working.

If cleaning is required the Probe is simply pulled through a squeegee that is part of the mounting bracket.

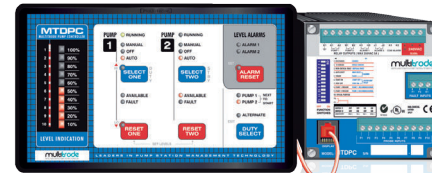
The Probe Connects To:

MultiSmart Pump Station Manager

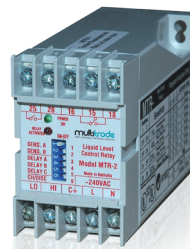
Full control and monitoring with SCADA connectivity – please see the MultiSmart brochure for details.



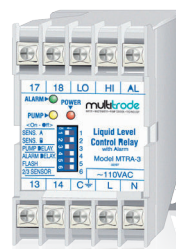
MTIC with
10 Probe Inputs



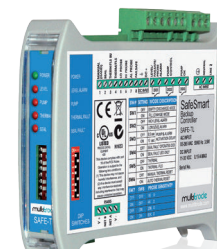
MTDPC with
10 Probe Inputs



MTR with
2 Probe Inputs



MTRA with
3 Probe Inputs



Safe-TL or Safe-FS with
3 Probe Inputs
Includes thermal/seal motor protection

Ordering Information and Examples

Model Code	Probe Length	Number of Sensors	Sensor Separation
0.2 / 1-xx	8in / 0.2m	1	N/A
0.5 / 3-xx	16in / 0.5m	3	6in / 150mm
1.0 / 10-xx	40in / 1.0m	10	4in / 100mm
1.5 / 10-xx	60in / 1.5m	10	6in / 150mm
2.0 / 10-xx	80in / 2.0m	10	8in / 200mm
2.5 / 10-xx	96in / 2.5m	10	10in / 250mm
3.0 / 10-xx	115in / 3.0m	10	12in / 300mm
6.0 / 10-xx	224in / 6.0m	10	24in / 600mm
9.0 / 10-xx	368in / 9.0m	10	35in / 900mm

xx = 10 (for 33ft or 10m of cable); or 30 (for 100ft or 30m of cable)

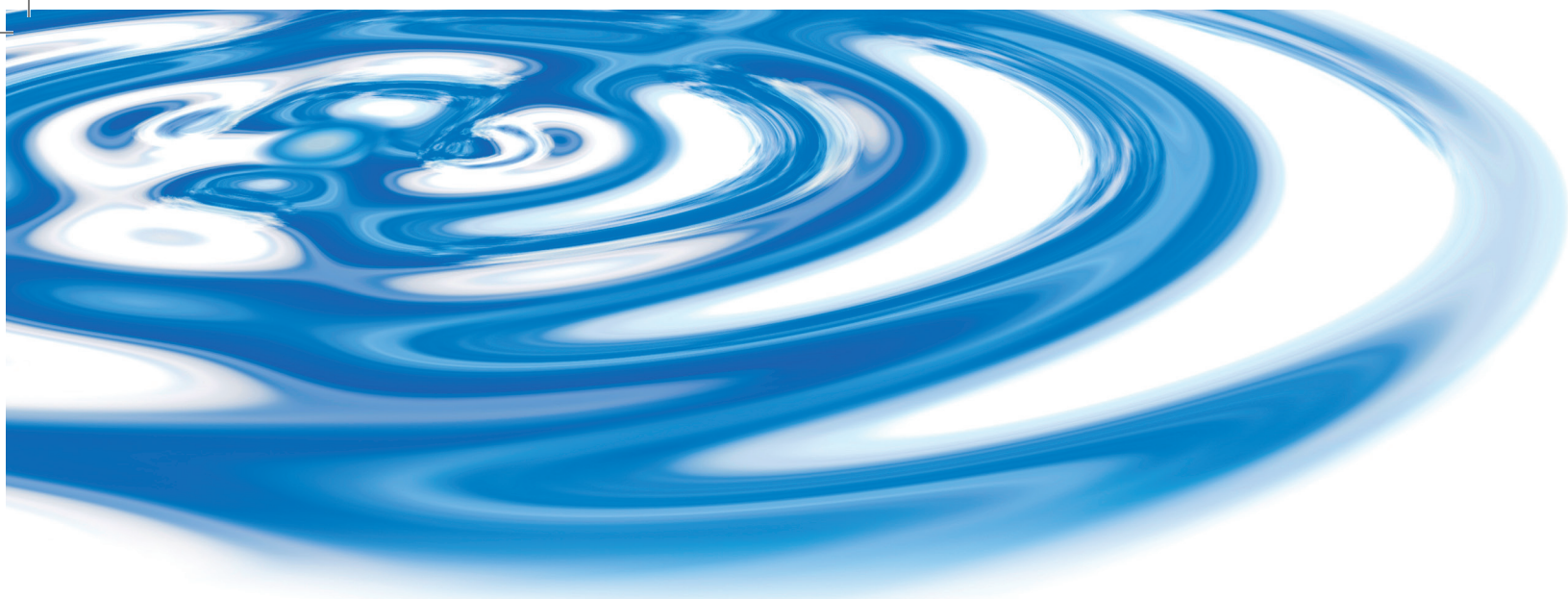
Probes are supplied with a standard length of cable in either 33ft / 10m or in 100ft / 30m lengths. The Probe comes in sizes ranging from 8 inches to 30 feet. It is available with 1-sensor, 3-sensors or 10-sensors.

2.5 / 10 -10

Probe Length (meters)
2.5

Sensor Points
10

Cable Length (meters)
10



In the complicated world of water and wastewater management, there is good reason why MultiTrobe stands unrivalled amongst its peers: We are committed to a singular vision of developing the latest technological advancements to provide sophisticated solutions to every day challenges in the water and wastewater industries.

Key to our success is the importance we place on customer satisfaction and solution-based products to save you time and money. From pump station management systems to engineering support, MultiTrobe encompasses it all. By investing heavily in R&D, we remain on the cutting edge of technology and always ahead of our competitors.

Our products are proven. Our results are tangible. MultiTrobe is unrivalled.

MultiTrobe, Inc - USA

990 South Rogers Circle, Suite 3
Boca Raton, Florida 33487
Tel: 561.994.8090 Fax: 561.994.6282
USsales@multitrode.com

MultiTrobe - UK

Unit 5 Kingswood Court
Longmeadow
South Brent
Devon TQ10 9YS
Tel: +44 1752 547355 Fax: +44 1752 894615
UKsales@multitrode.com

MultiTrobe Pty Ltd - Australia

Brisbane Technology Park
18 Brandl Street
Eight Mile Plains
Queensland 4113
Tel: +61 7 3340 7000 Fax: +61 7 3340 7077
AUsales@multitrode.com

MULTITRODE® and MULTISMART® are registered trademarks of MultiTrobe Pty Ltd in Australia, USA, and Europe. Designs registered for the MultiSmart Pump Controller Remote and Base Modules in Australia, USA, Europe and China. Patents pending in Australia, USA, and Europe.

©2012 MultiTrobe, Inc.

This publication is protected by copyright. No part of this publication may be reproduced by any process, electronic or otherwise, without the express written permission of MultiTrobe Pty Ltd.

