



Heavy Duty Coils

EFFICIENT HEAT TRANSFER. COMPACT DESIGN.

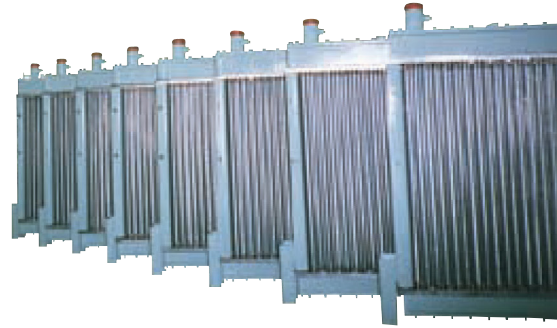
Standard 

a **xylem** brand

Heavy duty coils for...

Standard Xchange offers a broad range of industrial and commercial heat transfer coils. Our diversified line provides a wide selection of styles and materials of construction, backed by years of experience in meeting the heat transfer requirements of just about every industry. These products utilize finned tubes in a header construction with a heavy duty casing designed specifically for your application.

- Heavy Duty Steam Coils
- Heating and Cooling Coils
- Generator and Motor Coolers
- Transformer Coolers



CONSTRUCTION

INNER TUBES

Copper Nickel
Copper
Stainless Steel
Titanium
Others

FINS

Integral Aluminum Fins
5-7-8-9-10-11 or 14 fins/inch

HEADERS/WATER BOXES

Steel
Stainless Steel
Copper Nickel
Copper
Naval Brass

CASINGS

Galvanized Steel
Steel
Stainless Steel

COATINGS

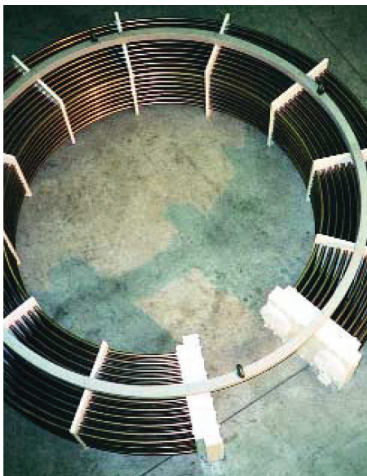
Heresite on Request



...a wide range of applications

Standard Xchange uses an integral finned tube to assure the highest efficiency, long life and reliability of service. The continuous helical fins are radially extruded from thick walled aluminum tubes in a cold rotary process. The result is an extremely rigid fin structure that is easy to maintain and has no possibility of loosening from the parent tube with a resulting loss in thermal performance. In similar fashion, corrosion at the fin interface is eliminated thereby promoting long coil life.

VARIABLE Design Characteristics



OPTIONS

- Expansion Joints
- Removable Cover Plates
- Gasketing

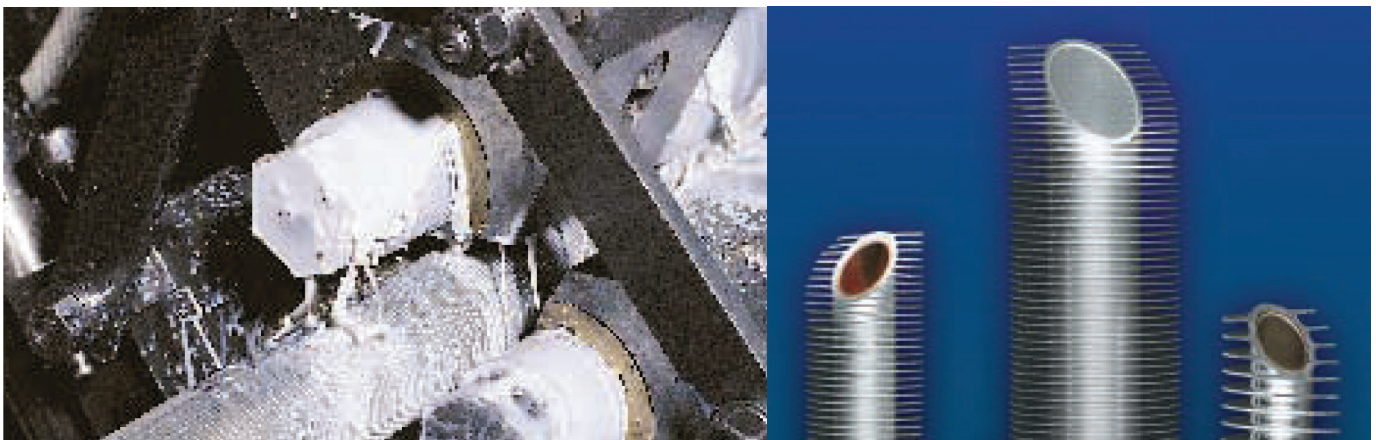
DESIGN STYLES

- VC - Double tube steam coil for maximum freeze protection.
- UH - Integral U-bend steam coil.
- UG - Integral U-bend coil with liquid in the tubes.
- MP - Multi pass coil with brazed U-bends.
- Z - Bent or flextube steam coil, 1 or 2 rows.

UNIQUE Mono Aluminum Finned Tubes

UNIQUE INTEGRAL FINNED TUBES

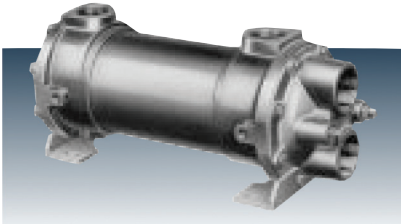
Bimetal type hifin tube is more than an ordinary mechanical engagement between the inner tube wall and the fin. An elastic deformation of both metals maintains heat transfer contact.



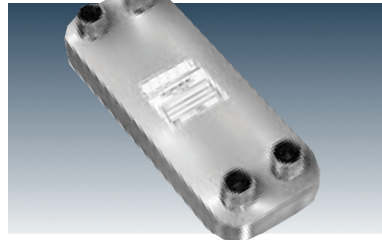
Standard Xchange Products

Designed to meet virtually every heat transfer application requirement.

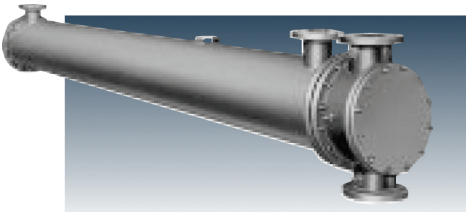
EFFICIENCY. EXPERTISE.



Pre-engineered shell-and-tube heat exchangers for general heating and cooling



Brazepak™ compact, vacuum-brazed, general purpose heat exchangers.



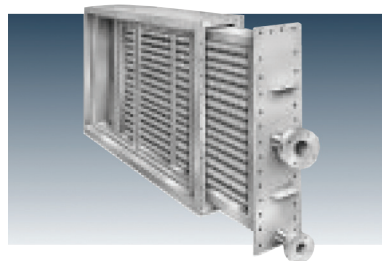
Engineered/customized heat exchangers for process and other heating/cooling applications.



Plateflow® plate-and-frame exchangers.



FanEx® air/oil, air/air, or air/water heat exchangers.



Heat transfer coils.