

# Xylem |'zīləm|

- 1) The tissue in plants that brings water upward from the roots;
- 2) a leading global water technology company.

We're 12,000 people unified in a common purpose: creating innovative solutions to meet our world's water needs. Developing new technologies that will improve the way water is used, conserved, and re-used in the future is central to our work. We move, treat, analyze, and return water to the environment, and we help people use water efficiently, in their homes, buildings, factories and farms. In more than 150 countries, we have strong, long-standing relationships with customers who know us for our powerful combination of leading product brands and applications expertise, backed by a legacy of innovation.

For more information on how Xylem can help you, go to [www.xyleminc.com](http://www.xyleminc.com)



Flygt is a brand of Xylem. For the latest version of this document and more information about Flygt products visit [www.flygt.com](http://www.flygt.com)

© 2014 Xylem, Inc.



## Flygt AquaView® 7

TOTAL WATER AND WASTEWATER SYSTEMS CONTROL. YOUR WAY.



# Flygt Aquaview® 7

## Plan. Personalize. Perform.

Can you customize your software in seconds? Are you simplifying daily workflows and optimizing performance? With the next-generation AquaView 7, you can plan, personalize and preform like never before.

Powerful and flexible, the AquaView 7 is different from any other SCADA system on the market. Why? Because it was engineered specifically by our pioneering experts to monitor, control and optimize water and wastewater applications – anywhere, anytime, and from any device. So whether you’re overseeing one plant or 1,000 facilities, you get one integrated system that gives you total control of your entire process and operation.

**Installation in hours, not days**  
Having installed more than 600 SCADA systems around the world, we’ve learned a lot about how to simplify workflows, improve performance and keep setups to a minimum. Since the AquaView 7 comes pre-configured for water and wastewater applications, you get a plug-and-play system that takes less than an hour to install.

This compares to the days or even months of engineering time required to configure standard SCADA systems. Upgrades are also easy. Most of our customers go back many years and we take great pride in keeping their systems well maintained and running smoothly.

**PLAN - Simpler, easier workflows**  
To better support your decision-making, we equipped the AquaView 7 with an easy-to-use engineering workflow. With daily overviews, you can easily check inflow and outflow rates, alarms and other information – actionable data that lets you proactively reduce maintenance.

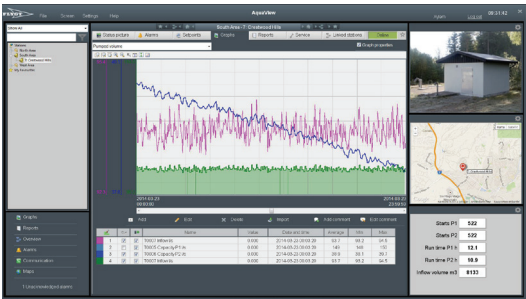
Want to scale up and add more pump stations? No problem. Our licensing agreement lets you add multiple sites and grow at your own pace. By working more efficiently, the system frees up more of your valuable time.

**PERSONALIZE - Modern, configurable interface**  
Everybody has his or her own personal preferences on how and what information they want to see. Some want regular overviews of key pump stations. Others appreciate the ability to drill down and see more detailed information. With AquaView 7, you can personalize your interface in seconds without having to engage an outside engineering team. You can also create customized reports to analyze data in just the format you like.

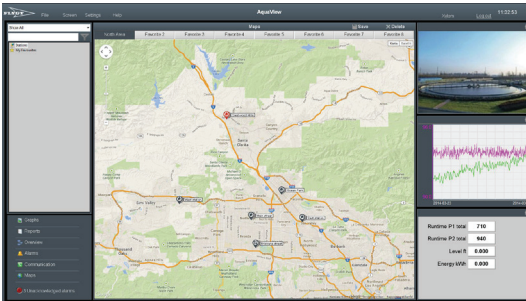
**PERFORM - Manage your assets more efficiently**  
Equipped with everything from built-in alarm management to advanced measurement systems, the AquaView 7 is designed to help you get the most of your water and wastewater systems. Advanced measurement data provides a reliable overview, including details such as inflow levels and power consumption. All relevant data is provided to you in a format that’s easy to overview and actionable.



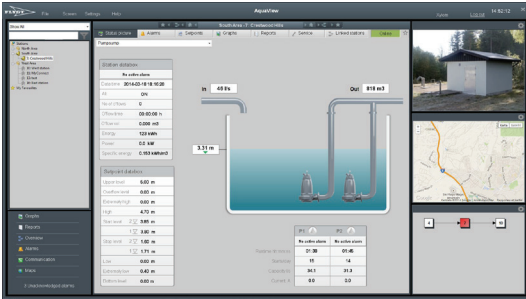
Technical data	
Operation	• All-in-one SCADA system for monitoring and controlling pump stations, equipment and performance.
Remote viewers	• Secure viewer, web-thin client and mobile client
Features designed for water and wastewater	• Minimum configuration for Flygt controllers • Optimized user interface • Map overview • Automatic pump network overview • Trend & report tool • Alarm handling • Asset management
Alarm distribution	• Built-in scheduler, SMS and e-mail messaging
Communication	• AquaCom, Modbus, DNP3, IEC60870-5 plus 235 alternative drivers • Ethernet, radio, dialed, GSM, 3G • Communication monitoring
OPC	• OPC DA server • OPC Client (UA, .NET, Xml/DA)



Built-in alerts are pushed to your desktop, phone or tablet, letting you know if immediate action is needed.



The new Google map functionality provides a real-time overview of up to 1,000 water or wastewater facilities.



Daily and weekly pump flow rates are shown in an easy format so you can fine-tune and optimize performance.

**Flygt monitoring & control and TotalCare services – even better together**

In the water and wastewater business, conditions change fast. And the more your equipment can tell you, the better you can perform. This is why we take a more complete approach to water management. One that combines the world’s most advanced pump technologies with fully integrated monitoring and control systems designed and tailored specifically for the demands of water and wastewater professionals like you.

Take Aquaview SCADA systems for example, which give more than 600 pump facility managers worldwide a total overview of their daily operations. The result? Fewer unplanned visits to pump stations, fewer emergency turn-outs and improved control of real-time operational performance. It’s just one of a range of intelligent solutions that make **Flygt monitoring & control and TotalCare services – even better together.**